

Board Meeting

# School Report

June 12, 2023



**Our Mission:**

SVN provides a safe, healthy, collaborative community of engaged learners who are inspired academically while fostering a supportive network for its families.



- Enrollment
- Curriculum
- Student Achievement
- Staff Update
- Building Project





| Grade           | # of NEW Students |
|-----------------|-------------------|
| Kindergarten    | 45                |
| 1 <sup>st</sup> | 1                 |
| 2 <sup>nd</sup> | 4                 |
| 3 <sup>rd</sup> | 3                 |
| 4 <sup>th</sup> | 1                 |
| 5 <sup>th</sup> | 3                 |
| 6 <sup>th</sup> | 2                 |
| 7 <sup>th</sup> | 3                 |
| 8 <sup>th</sup> | 1                 |

18

Total: 63

# Enrollment

Capacity: 414 Students



- Curriculum Resources
- Pacing Guides
- Assessments
- Vertical Alignment
- On-line Platforms
- Professional Development Calendar
- Data Driven

# Curriculum

## Our Reach



**20**  
# of weeks of programming



**790**  
# of hours reading



**88**  
# of students served



**95%**  
Engagement/attendance

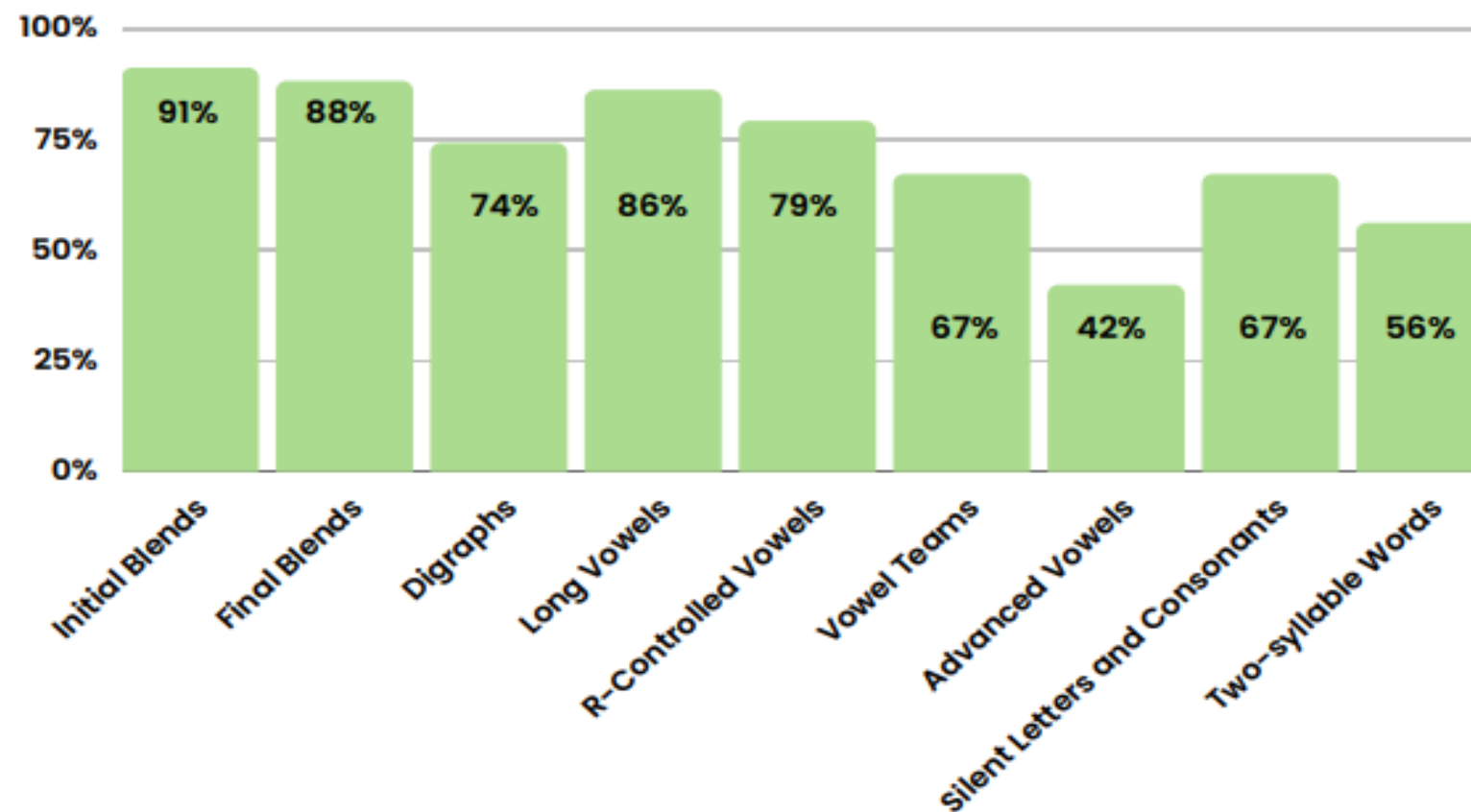


**2,371**  
# of lessons



## Post-intervention data for SVN students

■ Percent Mastery of Word Reading Skills at the cohort level



# Comparing HOOT Data

**Dec 12, 2022 to April 17, 2023**

- Based on F&P levels 27 students made 1-8 levels of growth
- Some students went down a level
- Looking at Lexile levels, 25 students are in the 4th grade Lexile level of 740-875.

There are a couple of scenarios to consider if a student went down. Students who went down in F&P may have gone up in reading complexity based on their higher Lexile level. Students who went up in F&P may have gone down in Lexile level. This is due to the level of text complexity measurement going up therefore, the Lexile score went down. These students would need to work on oral fluency before moving to more complex text. Students who went down one level may fluctuate between levels before they master oral fluency of complex text.



We will continue to analysis the HOOT data to determine:

- Progress Gains
- Pre-Word Reading Analysis
- Areas for Growth & Learning



# 2022-2023 8<sup>th</sup> Grade Class





# 2022-2023 8<sup>th</sup> Grade Class



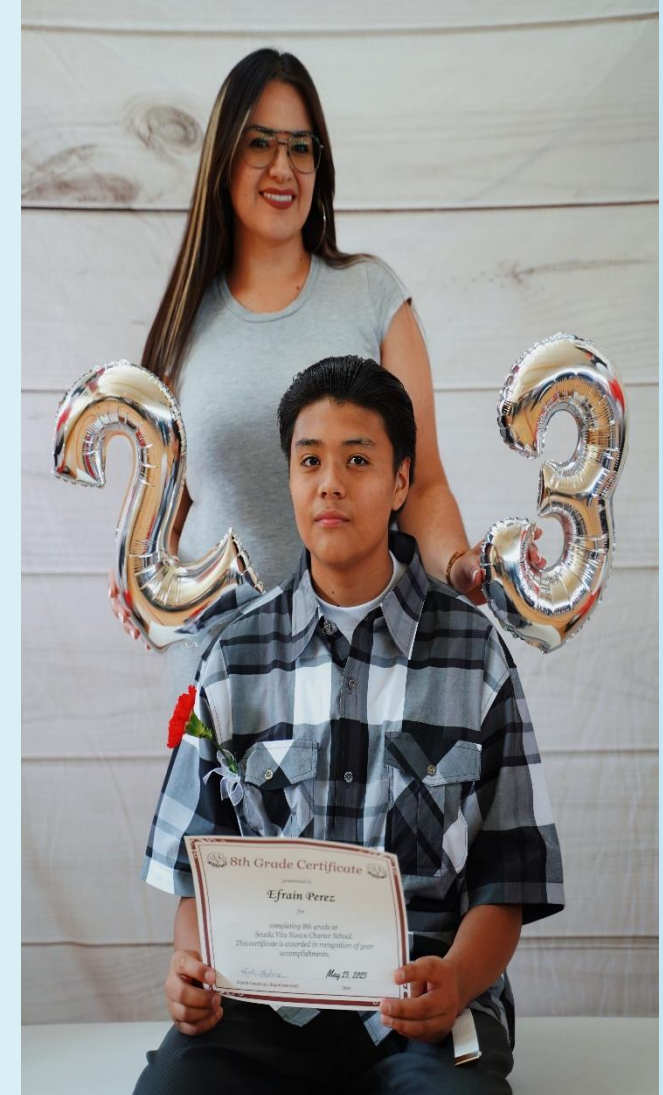


# 2022-2023 8<sup>th</sup> Grade Families





# 2022-2023 8<sup>th</sup> Grade Families





# 2022-2023 8<sup>th</sup> Grade Families





# 2022-2023 8<sup>th</sup> Grade Proud Alumni Parents

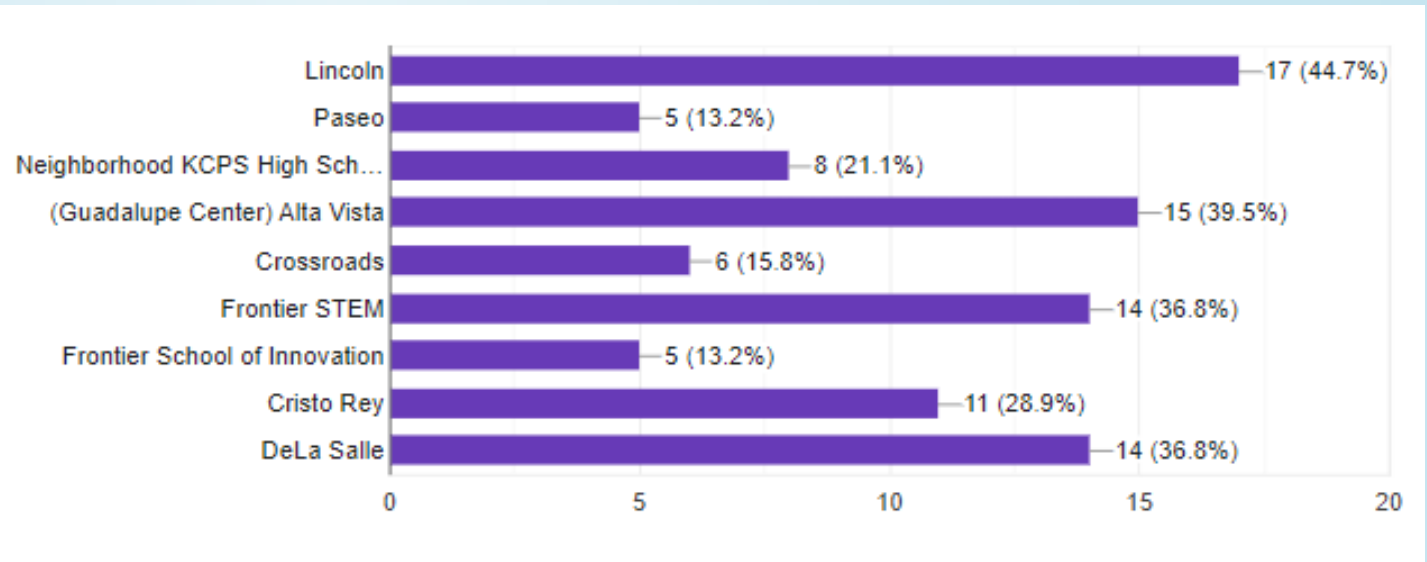




# 8<sup>th</sup> Grade Class High School List



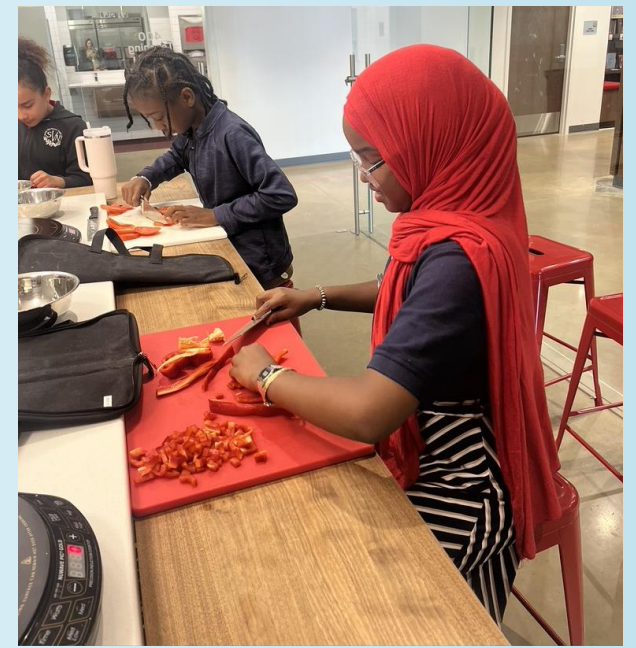
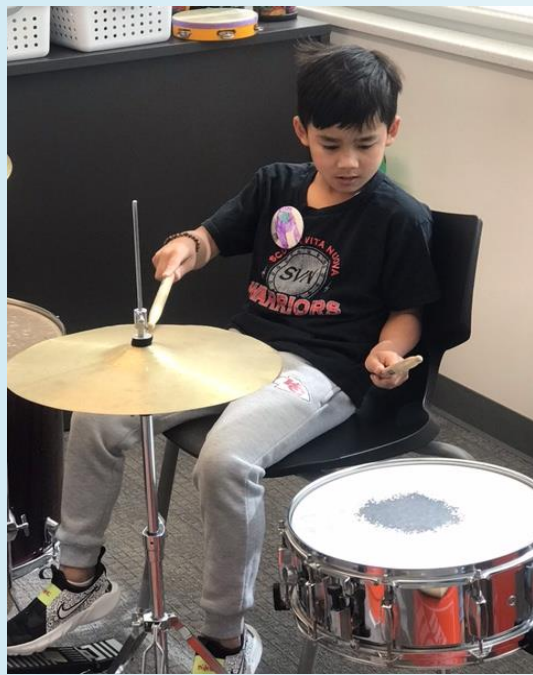
- Cristo Rey
- Crossroads
- Frontier STEM
- Frontier School of Innovation
- Guadalupe Center
- Lincoln
- Neighborhood KCPS High School





**Summer  
Camp**





Music

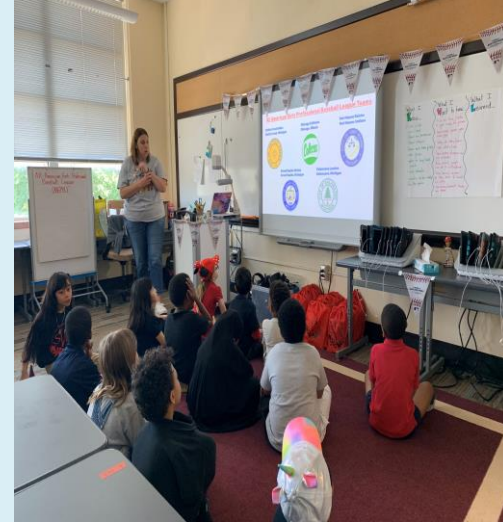
Art

Dance

Culinary



# Summer Camp



Martial Arts

Physical Activities



# Summer Camp



Sports



# Staffing Update

Scuola Vita Nuova Charter School

Home About Us Academics Families Leader in Me

## Employment Opportunities

**\*\*Looking for Passionate Team Members\*\***

[2nd Grade Classroom Teacher 2023-2024 School Year](#)

[5th / 6th Teacher \(Science Focus\) 2023- 2024 School Year](#)

[5th/6th Grade Teacher \(Math Focus\) 2023-2024 School Year](#)

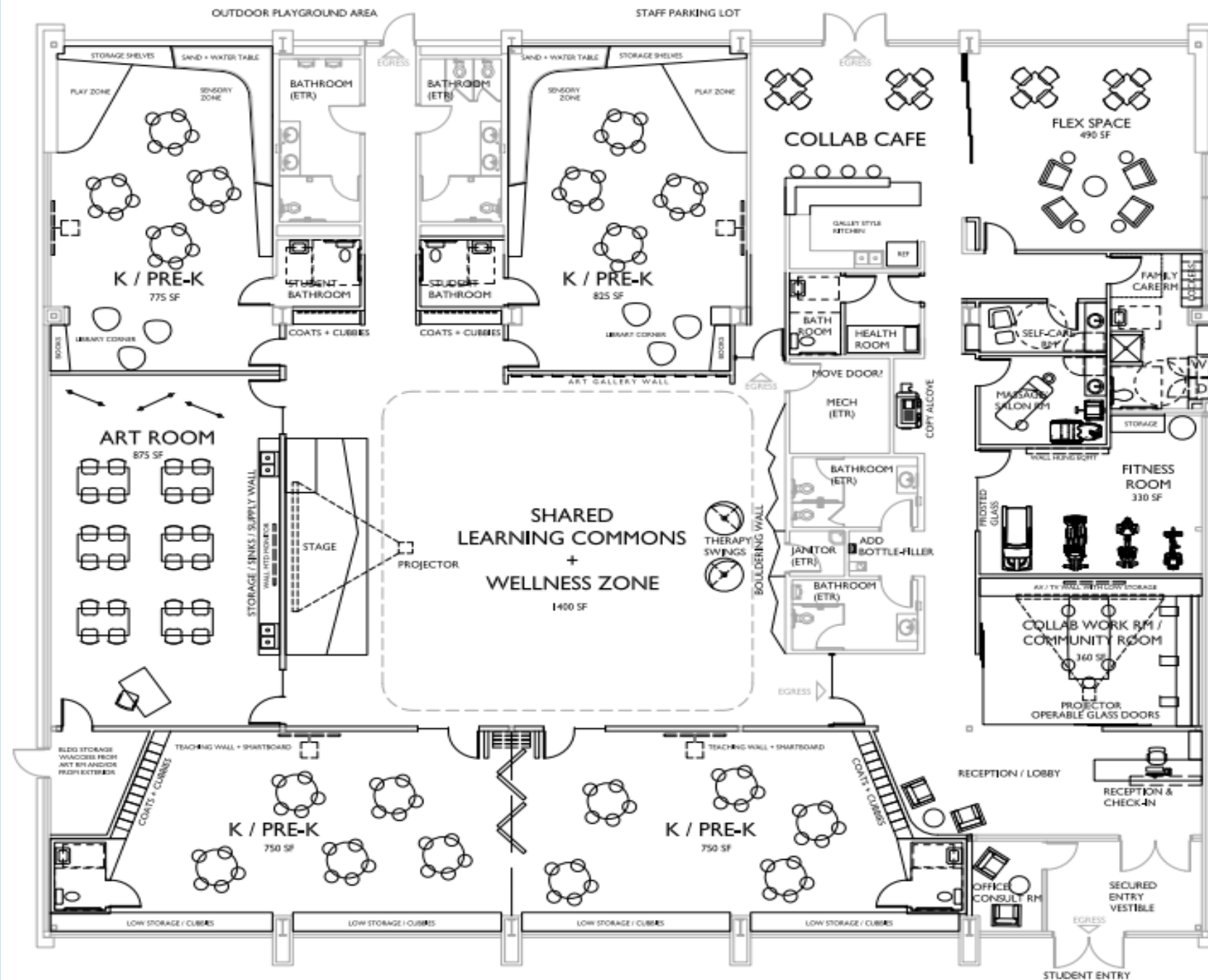
[5th/6th Teacher \(Social Studies Focus\) 2023-2024 School Year](#)

[7th/8th Grade Teacher \(ELA Focus\) 2023-2024 School Year](#)

[K-8 PE Teacher 2023-2024 School Year](#)

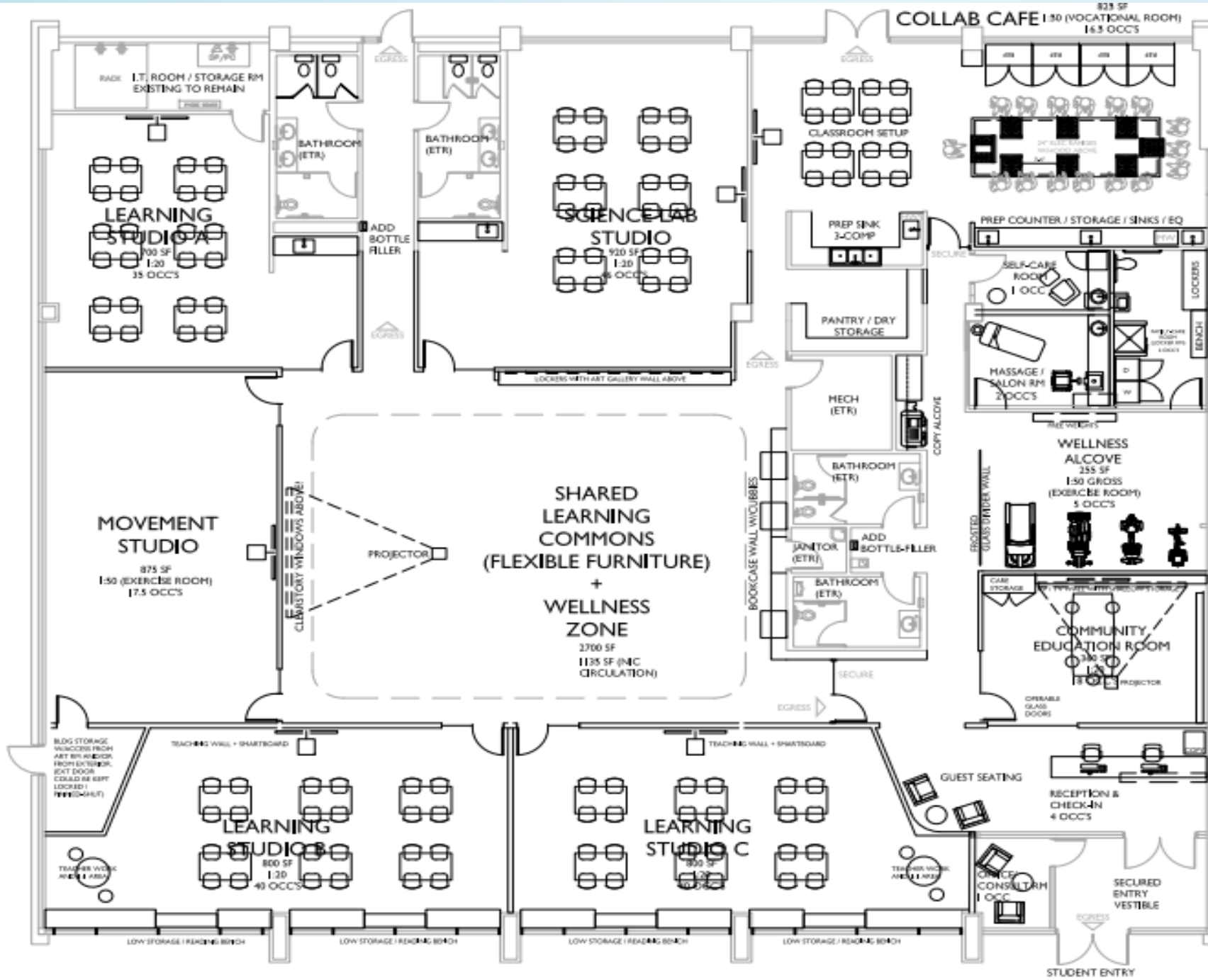
[Speech Language Pathologist \(2023-2024 School Year\)](#)





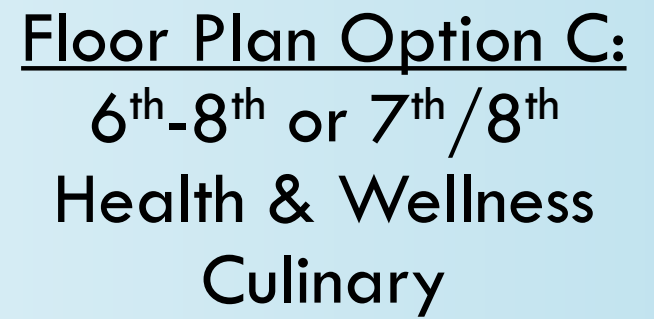
## Floor Plan Option A: Prek/K Staff Health & Wellness





Floor Plan Option B:  
 6<sup>th</sup>-8<sup>th</sup> or 7<sup>th</sup>/8<sup>th</sup>  
 Health & Wellness  
 Culinary





Thank you  
for serving the  
SVN  
Community!

